

UNIFORM STATUTORY DECLARATION FORM FOR THE REGISTRATION OF FITTING DESIGNS

NEW BRUNSWICK
NUNAVUT

NOVA SCOTIA
YUKON

PRINCE EDWARD ISLAND
NORTHWEST TERRITORIES

NEWFOUNDLAND AND LABRADOR

| | |
|---|---|
| MANUFACTURERS NAME: <u>Swagelok Company</u> | |
| MANUFACTURERS ADDRESS: <u>29500 Solon Road, Solon, Ohio 44139 USA</u> | |
| PLANT LOCATIONS: <u>Headquarters: 29500 Solon Road, Solon, Ohio 44139 USA (See Attachment A)</u> | |
| <p align="center">CATEGORY OF FITTINGS TO BE REGISTERED. CIRCLE ONE CATEGORY ONLY</p> <p>A Pipe fittings, including couplings, tees, elbows, Ys, plugs, unions, pipe caps, or reducers B Flanges: all flanges C Valves: all line valves D Expansion joints, flexible connections, and hose assemblies: all types E Strainers, filters, separators, and steam traps F Measuring devices, including pressure gauges, level gauges, sight glasses, levels, or pressure transmitters G Certified capacity-rated pressure relief devices acceptable as primary over pressure protection on boilers, pressure vessels, piping and fusible plugs H Pressure retaining components that do not fall into one of the above categories N Nuclear components: Class 1 <input type="checkbox"/> Class 2 <input type="checkbox"/> Class 3 <input type="checkbox"/> (Meeting AECB or ASME requirements)</p> | <p align="center">TITLE OF THE STANDARD OF CONSTRUCTION</p> <p>ASME B31.1 and ASME B31.3 (for unlisted components)</p> |
| <p>SHOW MANUFACTURERS NAME, TRADEMARK, OR LOGO AS IT WILL APPEAR ON THE PRODUCT</p> <p align="center" style="font-size: 2em;">Swagelok</p> | <p align="center">TYPE OF CONSTRUCTION</p> <p>FORGED <input type="checkbox"/> WELDED <input type="checkbox"/> WROUGHT <input checked="" type="checkbox"/> CAST <input type="checkbox"/> OTHER <input type="checkbox"/> DESCRIBE OTHER:</p> |
| <p>LIST OF SUPPORTING DOCUMENTATION AND IDENTIFICATION OF THE ACTUAL ITEMS TO BE REGISTERED:</p> <p>ISO 9001:2015 Certificate, Attachment A, Attachment B, product catalog and other support documents</p> | |

DECLARATION:

I David H. Peace (see note 3) employed by Swagelok Company and being the person having full authority and responsibility for the quality of the end product do solemnly declare that the information contained in this form is true and to the best of my knowledge represents the product for which registration is sought. The dimensions, materials of construction, pressure temperature ratings, and identification markings are in accordance with the herein named standards. I further declare that the manufacture of these fittings is regulated by a Quality Control Program which extends to each plant where fabrication occurs in whole or in part and has been verified by BSI as being suitable for that purpose and I make this solemn declaration conscientiously believing it to be true, and knowing that it is of the same force and effect as if made under oath.

Signature of Declarer: [Signature]

Declared before me at Solon, Ohio

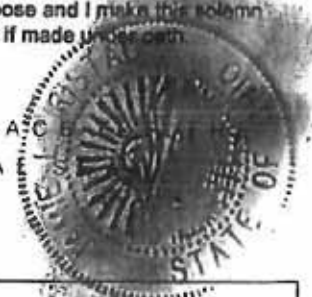
This 13th day of November AD 2017

Commissioner of Oaths or Notary Public: (sign) [Signature]

(Affix Official seal to the right)

USE THIS SPACE OFFICIAL

Jamie L. Ristau
Resident Portage County
Notary Public, State of Ohio
My Commission Expires: 03/06/2019



| | |
|--|---|
| <p align="center">This space for Regulatory Authority use</p> <p align="center">This registration must be revalidated after ten (10) years from the date of acceptance.</p> <p>CRN: <u>OC18486.2</u></p> <p>FID#: <u>1214</u></p> <p>Notes: 1. All fittings shall be registered in the name of the Manufacturer. 2. Each category shall be supported with two Statutory Declaration forms and one copy of supporting documentation. 3. The declaration shall be made by the person having full authority and responsibility for the quality of the end product. 4. Quality control programs shall be resubmitted for validation at a maximum interval of five (5) years.</p> | <p align="center">New Brunswick DEPT OF PUBLIC SAFETY BOILER & PRESSURE VESSEL ACT</p> <p align="center">REGISTRATION ONLY</p> <p>CRN <u>OC18486.27</u></p> <p>EXAMINER: <u>[Signature]</u> for CHIEF BOILER INSPECTOR</p> |
|--|---|

DATE 5/4/2018

BLRs PVs
 FITTINGS COMPONENTS

Attachment B. Scope of Registration for Swagelok MN Series Process Monoflanges (Category C)

Product Scope

This document represents the scope of Swagelok MN Series Process Monoflanges covered by this submission for CRN approval. These products were designed and evaluated in accordance with ~~ASME B31.1~~ and ASME B31.3 as unlisted components.

Summary Table

code of construction is B31.3 only UR

The below table holds true for:

- MN02 Outside Screw & Yoke Series
- MN03 Integral Screwed-Bonnet Needle Valve Series, and
- MN04 Bolted-Bonnet Needle Valve (Primary Bloc) Series

| Body Material/ Specification | Configuration | ASME Class | Flange Size | Minimum Temperature | Maximum Working Pressure (psig) ¹ | |
|---------------------------------|------------------------|------------|-------------------|---------------------|--|----------|
| | | | | | At 70°F | At 300°F |
| F316/F316L ASTM A182 | Block Valve | 150 | 1/2 in. (DN 15) | -58°F | 6000 | 4660 |
| | Block and Bleed Valve | 300/600 | 3/4 in. (DN 20) | | | |
| | | 900/1500 | 1 in. (DN 25) | | | |
| | Double Block and Bleed | 2500 | 1 1/2 in. (DN 40) | | | |
| | | | 2 in. (DN 50) | | | |

- 1) Maximum temperature: PTFE Packing 400°F, Graphite Packing 850°F,
- 2) All seat and seal combinations
- 3) All flange types: RF smooth, RF serrated, and RTJ
- 4) Outlet connection: 1/2 in. female NPT, Monoflange wafer (thru holes)
- 5) Bleed connection: 1/4 in. female NPT, 1/2 in. female NPT, or none

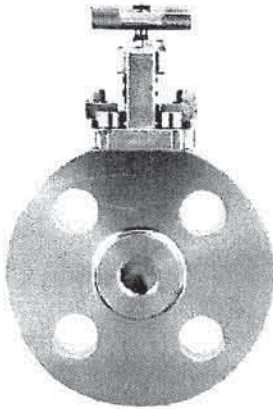
| | |
|--|--|
| ABSA | |
| SAFETY CODES ACT - PROVINCE OF ALBERTA | |
| REGISTRATION OF FITTINGS | |
| REGISTRATION NO. | <u>OC18486.2</u> |
| DWG. NO. or CAT. NO. | <u>Attachment B</u> |
| TYPE OF FITTINGS | <u>Valve Assemblies</u> |
| APR 11 2018 | INITIALS <u>Keith Rudolf</u> |
| Date | KEITH RUDOLF, P.Eng. DESIGN SURVEY ENGINEER |

As Noted

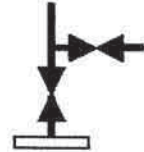
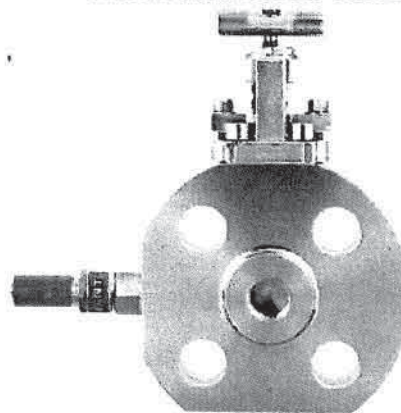
**"See Acceptance Letter for the comments
and/or conditions of registration"**

Product Drawings/Configurations

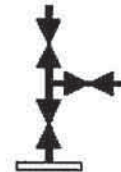
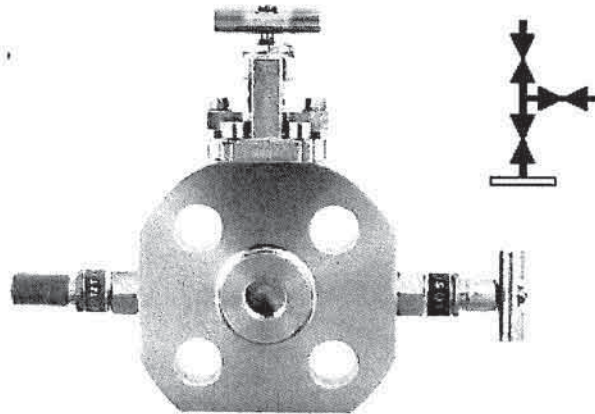
Block Valve



Block and Bleed Valve



Double Block and Bleed Valve



0018486.2

APR 11 2018

Typical Product Characteristics:

The list below shows examples of product options which do not affect the pressure-temperature ratings shown in the above Summary Table. All of the following options are within the scope of this registration:

- Bar Handles (available for block valves and bleed valves)
- Handwheel Handles (for block valves)
- Antitamper bleed valve
- Sour gas service

Quality System

The Swagelok Company quality system complies with the requirements of BS EN ISO 9001:2008. The Swagelok Company maintains British Standards Institution Certificate of Registration Number FM 01729, which applies to all locations listed on the Certificate.

Special Ordering Instructions

None

References

The product catalog does not represent the full scope of registration, but rather details some of the most common options.

- Swagelok Process Interface Valves MS-02-340, R10